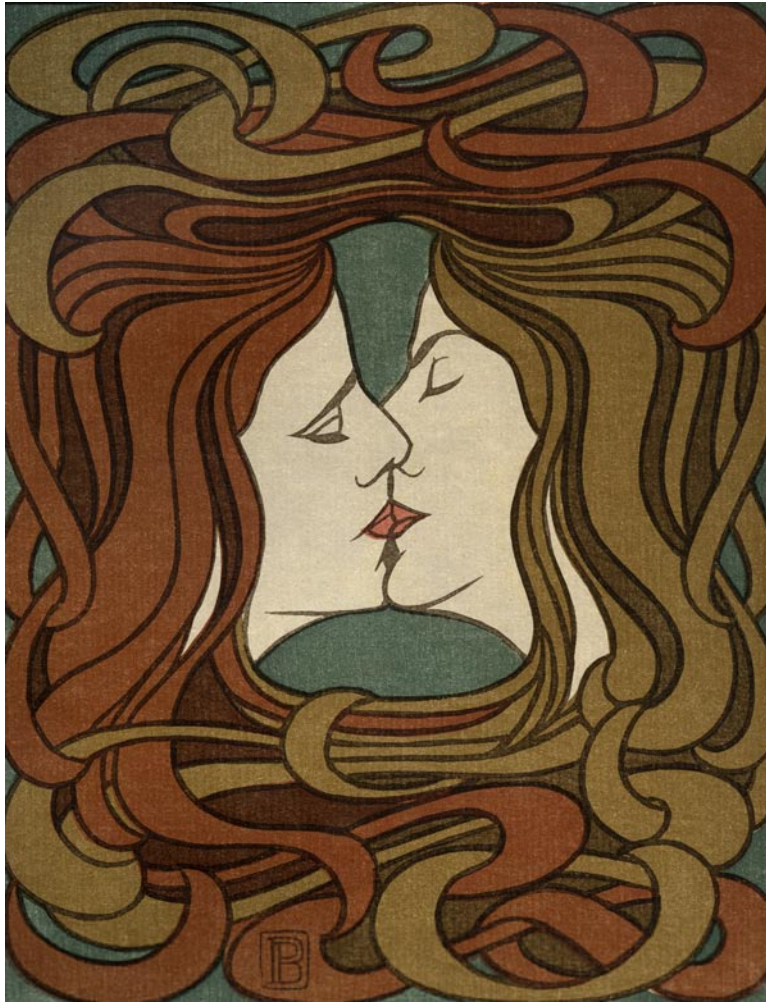


PAN

A Graphic Arts Time Capsule of Europe
1895-1900



List of Works with Images

80 Works in Total

BEARDSLEY, AUBREY (English 1872-1898)

Isolde

Line etching and printed color



BEHRENS, PETER (German 1868-1940)

Ohne Titel (Der Kuss)/Untitled (The Kiss)

6-color woodcut, 1898

52902-6



BEHRENS, PETER (German 1868-1940)

Winterlandschaft/Winter Landscape

Woodcut, 1899

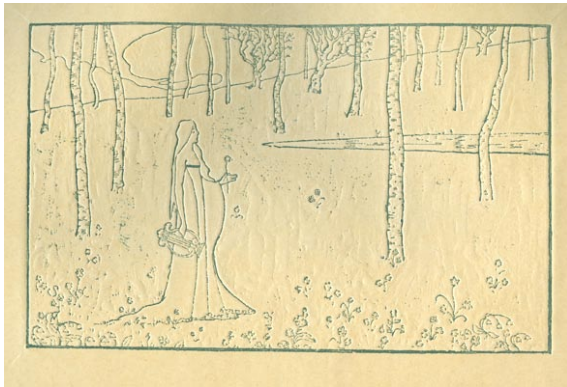
53004-4



\
DENIS, MAURICE (French 1870-1943)
Ohne Titel (Mutter und Kind)/Untitled (Mother and Child)
Lithograph, 1897
52803-7



DUMONT, MAURICE (French 1869-1899)
Sappho
Glyptograph (linoleum cut), 1895
52601-4



ECKMANN, OTTO (German 1865-1902)
Nachtreier/Night Herons
Color lithograph, 1895
52602-6



ECKMANN, OTTO (German 1865-1902)

Schwertlilien/Iris

Color woodcut, 1895

52603-2



ECKMANN, OTTO (German 1865-1902)

Wenn der Frühling kommt/When Spring Comes

Color woodcut, circa 1895

52703-8



EDMOND-CROSS, HENRI (né Henri-Edmond-Joseph Delacroix , French 1856-1910)

In den Champs-Elysées/On the Champs-Élysées

Color lithograph, 1898

52901-5



GEYGER, ERNST MORITZ (German 1861-1941)

Der Riese./The Giant

(with text by Friederich Nietzsche)

Etching, 1895

52602-3



HALM, PETER (German 1854-1923)

Ohne Titel (Pappeln)/Untitled (Poplars)

Etching, 1895

52604-1

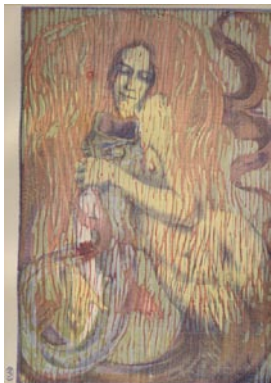


HÉRAN, HENRI (Pseudonym of Paul Hermann, German 1864-1940)

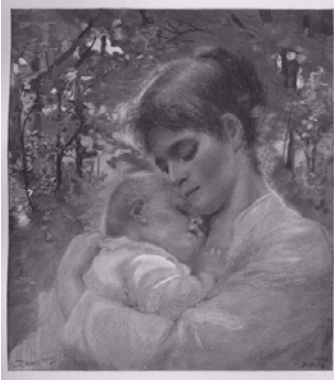
Spielendes Meerweib/Frolicking Mermaid

Color woodcut, 1897

52804-4



HÖNEMANN, MARTIN (German 1858—c. 1925?)
Mutter und Kind/Mother and Child
Wood engraving, after Dora Hitz, 1891/96
52701-5



ILLIES, ARTUR (German 1870-1953)
Mondaufgang/Setting Moon
Color etching, 1896
52704-2



KAMPMANN, GUSTAV
Steigende Nebel/Rising Fog
Lithograph, 1896
52703-3



KAMPMANN, GUSTAV (German 1859-1917)

Thalmühle (Austria)

Color lithograph, 1898

52903-4



KAMPMANN, GUSTAV (German 1859-1917)

Ballwolken/Ball Clouds

Color lithograph, 1899

53003-2

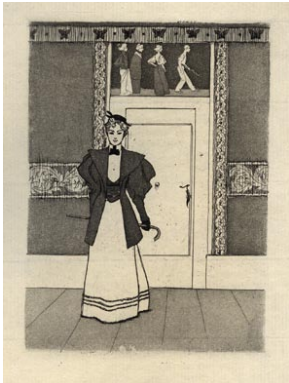


KIRCHNER, EUGEN (German 1865-1938)

Ohne Titel (*Dame mit Spazierstock*)/Untitled (Woman Dressed to Go Out)

Etching, 1895

52604-4



KIRCHNER, EUGEN (German 1865-1938)

November

Etching, 1896

52703-6



KLINGER, MAX (German 1857-1920)

Der Philosoph (aus "Vom Tode, II")/The Philosopher (from "Of Death, II")

Etching

52602-4



KLINGER, MAX (German 1857-1920)

Erinnerung/Memory

Etching, 1896

52702-1



KLOTZ, ERNST (German 1863-?)
Mädchenkopf/Head of a Young Woman
Color etching, 1895
52603-3



KLOTZ, ERNST (German 1863-?)
Zwei Studienköpfe/Two Studies of Heads
Etching, 1895
52603-4



KOLLWITZ, KÄTHE (German 1867-1945)
Begrüssung/Welcoming
Etching, 1892
53001-3



KÖPPING, KARL (German 1848-1914)
Köppingsche Ziergläser/Köpping Ornamental Glasses
Etching, 1896
52703-11



KRÜGER, ALBERT (German 1858-?)
Knieender Akt (nach Degas)/Kneeling Nude (after Degas)
Etching printed in red ink, 1896
52801-3



KRÜGER, ALBERT (German 1858-?)
Jacob Burckhardt
2-color woodengraving, 1897
52902-5

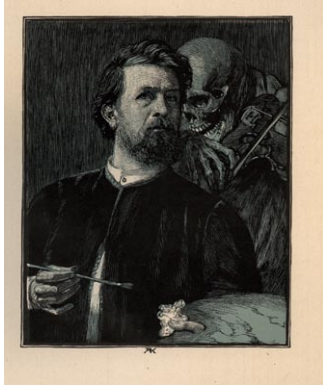


KRÜGER, ALBERT (German 1858-?)

Böcklin's Selbstbildnis mit Tod/Böcklin's Self Portrait with Death

Wood engraving. 1898

52904-2



LEISTIKOW, WALTER (German 1865-1908)

Baumgruppe/Grove of Trees

Etching, 1896

52701-2

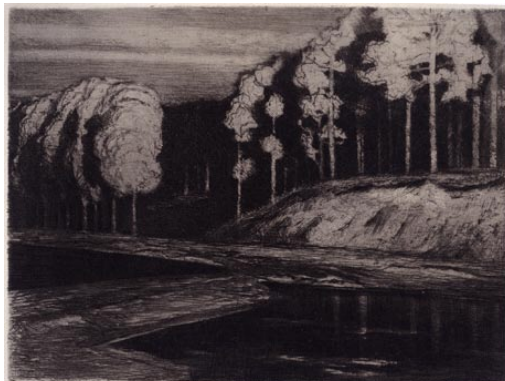


LEISTIKOW, WALTER (German 1865-1908)

Waldsee/Forest Lake

Etching, 1896

52801-1



LEISTIKOW, WALTER (German 1865-1908)

Kraniche/Cranes

Color lithograph, 1898

52902-3



LEISTIKOW, WALTER (German 1865-1908)

Das Haus/The House

Etching, 1899

53004-2



LÉVEILLÉ, ANDRÉ (French 1880-1963)

Bastien Lepage

Wood engraving, 1896

52801-4



LIEBERMANN, MAX (German 1847-1935)
Kellergarten in Rosenheim/Keller Park in Rosenheim
Etching, 1895
52601-3



LIEBERMANN, MAX (German 1847-1935)
Theodor Fontane
Lithograph, 1896
52701-1



LIEBERMANN, MAX (German 1847-1935)
Holzsuchende Frauen/Women Gathering Wood
Lithograph printed in gray ink, 1899
53004-1



LIEBL, WILHELM (German 1844-1900)
Bildnis einer alten Frau/Portrait of an Old Woman
Etching, 1897
52802-1



LUCE, MAXIMILIEN (French 1858-1941)
Hochöfen/Blast Furnace
Color lithograph, 1898
52901-2



LÜHRIG, GEORG (German 1868-1957)
Freya und die Riesen/Freya and the Giants
Color lithograph, 1896
52702-7



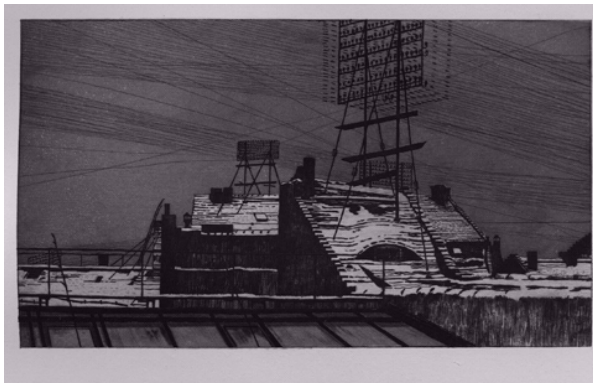
MAURIN, CHARLES (French 1856-1914)
Mutter und Kind/Mother and Child
Etching, 1896
52701-7



MORDANT, DANIEL (French 1853-1914)
Le Sommeil (d'après Eugène Carrière)/Sleep (after Eugène Carrière)
Engraving (incorrectly called an etching in the catalogue), 1896
53002-1



MÜLLER, RICHARD (Austrian 187-1954)
Schneedächer mit Telefonstand/Snowy Roof with Telephone Equipment
Etching, 1899
53002-3



NAAGER, FRANZ (German 1870-1942)
Ritter im Gruenen/Rider in the Forest
(with poem by Gustav Falke)
Color lithograph, 1895
52603-1



NICHOLSON, WILLIAM (British 1872-1949)
Alte Frau/Old Woman
Color woodcut, 1897
52803-4



OLDE, HANS JOHANN WILHELM (German 1855-1917)
Klaus Groth
Etching, 1896
52704-1

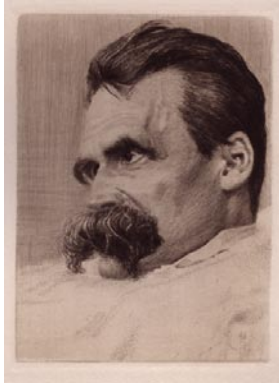


OLDE, HANS JOHANN WILHELM (German 1855-1917)

Friedrich Nietzsche

Etching, 1899

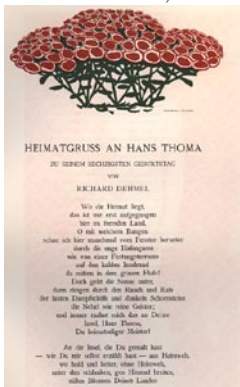
53004-3



ONASCH, THEODORA (German---)

Ornament

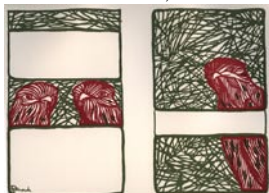
Color linocut, 1899



ONASCH, THEODORA (German---)

Ornament

Color linocut, 1899



ORLIK, EMIL (Czech 1870-1932)

Kurzweil/Playtime

Etching, 1897

52803-5

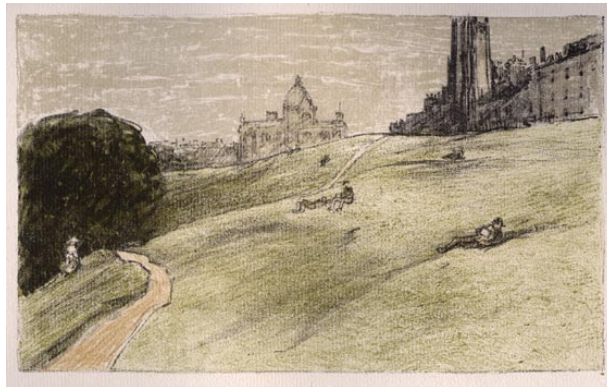


ORLIK, EMIL (Czech 1870-1932)

Edinburgh

Color lithograph, 1899

53002-2



PENNELL, JOSEPH (American 1860-1926)

Küstenlandschaft/Coastal Landscape

Lithograph, 1896

52704-4



PETITJEAN, HIPPOLYTE (French 1854-1929)
Dekorativer Entwurf/Study for a decorative panel
Color lithograph, 1898
52901-4



PETITJEAN, HIPPOLYTE (French 1854-1929)
Maurice Maeterlinck
Lithograph, 1898
52804-5



RODIN, AUGUSTE (French 1840-1917)
Antonin Proust
Etching, 1897
52803-8

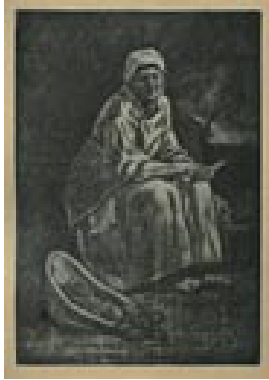


ROPS, FELICIEN JOSEPH VICTOR (Belgian 1833-1898)

Oute Kat

Soft ground etching, 1895

52601



ROTHENSTEIN, SIR WILLIAM (British 1872-1945)

Walter Crane

Lithograph, 1896

52704-3



SEURAT, GEORGES after (French 1859-1891)

Nude, Back View

Photolithograph, 1899

pp. 54/55



SIGNAC, PAUL (French 1863-1935)

Abend (Le Soir—La Jetée de Flassingue)/Evening, The Pier at Flassingue

Color lithograph, 1898

52901-1



SKARBINA, FRANZ (German 1849-1910)

Droschke im Regen/Wagon in the Rain

Color lithograph, 1896

52701-4



STAUFFER-BERN, KARL (Swiss 1857-1891)

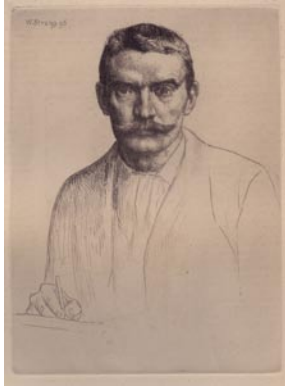
Peter Halm

Etching, 1895

52603-5



STRANG, WILLIAM (Scottish 1859-1921)
Selbstporträt/Self Portrait
Etching, 1895
52704-5



THOMA, HANS (German 1839-1924)
Der Geiger/The Fiddler
Color lithograph, 1895
52602-5



THOMA, HANS (German 1839-1924)
Landschaft/Landscape
Color lithograph (on aluminum plate), 1896
52703-9



TOULOUSE-LAUTREC, COMTE HENRI DE (French 1864-1901)
Mademoiselle Marcelle Lender en Buste/Bust of Miss Marcelle Lender
8-color lithograph, 1895
52603-6



VALLOTON, FÉLIX EDOUARD (Swiss 1865-1925)
Porträt von Robert Schumann/Portrait of Robert Schumann
Woodcut, 1893
52601-2



VAN DE VELDE, HENRY (Belgian 1863-1957)
Plakat (Tropon)/Poster (Tropon)
Color lithograph, 1898
Note: “Eiweiss Nahrung” means “Protein Food”
52901-6



VAN RYSELBERGHE, THÉO (Belgian 1862-1926)

Henri de Regnier

Lithograph, 1898

52901-3



VELDHEER, JACOB GERARD

Ohne Titel (Kleinstadt) Untitled (Small Town)

Woodcut printed in olive ink, 1895

52604-3



VELDHEER, JACOB GERARD (Dutch 1866-1954)

Of Macken/In Macken

Woodcut, 18953001-4

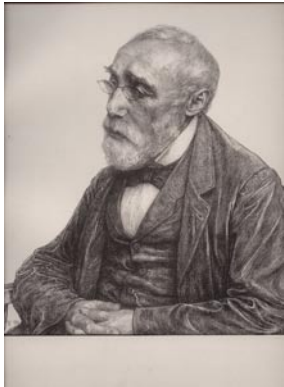


VETH, JAN PIETER (Dutch 1864-1925)

Josef Israels

Lithograph, 1896

52802-4



VOLZ, WILHELM (German 1855-1901)

Salomé

Color lithograph, 1896

52703-1



VOLZ, WILHELM (German 1855-1901)

Aufzug und Tanz der Nymphen/Dance of the Nymphs

2-color lithograph, 1898

52902-4



VON HOFMANN, LUDWIG (German 1861-1945)

Adam and Eve

Color lithograph, 1896

52801-2



VON HOFMANN, LUDWIG (German 1861-1945)

Sonnige Tage/Sunny Day

Color lithograph, 1897

52804-1



VON KALCKREUTH, LEOPOLD GRAF (German 1855-1928)

Heimkehr/Journey Home

Lithograph printed in dark blue ink, 1897

52804-3



VON KALCKREUTH, LEOPOLD GRAF (German 1855-1928)

Ninnenei und Muhme/Ninnenei and Auntie

Etching, 1899

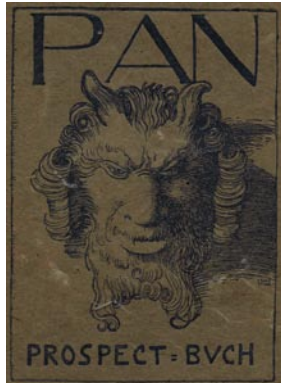
53003-1



VON STUCK, FRANZ (German 1863-1928)

Pan cover illustration

Woodcut, 1895



VON VOLKMANN, HANS RICHARD (1860-1927)

Kapelle (Eifel)/Chapel (Eifel)

Color lithograph, 1898

52903-2



ZORN, ANDERS (Swedish 1860-1920)

Porträt/Portrait

(Mme Simon II)

Etching

52602-2



ZORN, ANDERS (Swedish 1860-1920)

Paul Verlaine (II)

Etching, 1895

52701-6

